





REINVENTING THE ART OF STORAGE

Precious wood, pure lines, luxurious details the **MajorDomo** hangers and coat racks reconnect with a certain idea of the art of living. Daily object, the hanger becomes a full art design object and exposes itself.

Shaped by the craftsman's hand in a solid and durable ash wood, MajorDomo is available in natural wood or painted in white, black, amaranth red or in two colors for a touch of originality.

The discrete 24-carat gold-plated elements, which connect the two movable parts of the hanger, contrast elegantly with the simplicity of the wood.

A high-end artisan product combining Italian know-how and Swiss precision

Majordomo produces different models of wall and travel hangers, with their own design and functionality.
Every product can be completely personalized in colours and finishing.
The engraving of either brand logo or initials will make unique a classy object.

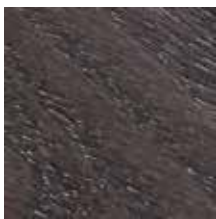
COLOR



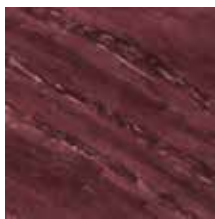
Natural 7



White 1



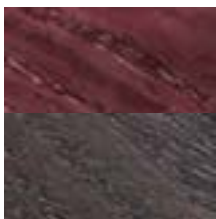
Black 2



Amarantine 3



4



5



6

Multicolor

RIALTO

Wall hangers

Just like the famous Rialto bridge on the Grand Canal in Venice, these wall hangers stand out for their elegant design, harmonious proportions and refined details.

With their variety of colours, the hangers can easily be put in every type of furnishings; the shades' combination is the creative expression of the most noble moods.

The Rialto wall hangers can be placed in the hall, to immediately seize your guests' eyes, or in the bedroom, as a support for the clothes. If put in the bathroom, they hang clothes, towels and bathrobes.



RIALTO SUNSET

Dimensions:

width 43 cm

thickness 11 mm

weight 0.550 Kg



RIALTO BLACK



RIALTO WHITE



RIALTO DAY & NIGHT



RIALTO STORM



RIALTO SUMMER



RIALTO NUDE

CASANOVA

SET OF COAT HANGERS AND TROUSER HOLDERS

The two wall coat-hangers and the trouser holder of the Casanova set are extremely practical: thanks to their movable arms they can be opened and closed. When the arms are fully open, it is possible to place two pairs of trousers on them.

Perfect in every room, from the bedroom to the bathroom

Like the famous Venetian Giacomo Casanova, Casanova's coat hangers and trouser holders are characterized by great versatility: they can be placed in every room of the house, from the bedroom to the bathroom, because they harmonize with the environment, becoming an integral part of the furniture and embellishing it.



CASANOVA BLACK



CASANOVA WHITE



CASANOVA BLACK

CASANOVA SUNSET



CASANOVA DAY & NIGHT

CASANOVA STORM



CASANOVA SUMMER

CASANOVA NUDE

POLO

Travel hangers with perfect design It follows you wherever you go

A classy traveller always needs to have accessories that measure up with his destinations.

In this Majordomo's line, the careful choice of the materials matches with the functionality of the moving parts, which allow the hanger to be closed.

Put in the luggage, Polo finds its place among the clothes.

Placed inside a walk-in closet, it becomes a perfect space-saving solution. Found in the wardrobe, it is a pleasant surprise for your guest.

Some peculiar travel hangers are made with cedar wood, a variety of wood that is highly valued for its gradually released aroma: the clothes and the wardrobe will be permeated by a pleasant freshness.



Dimensions:

width 43 cm,
thickness 27 mm,
weight 0.250 Kg



POLO BLACK



POLO WHITE



POLO DAY & NIGHT



POLO STORM



POLO SUMMER



POLO SUNSET



POLO NUDE

PALLADIO COLLECTION



DECORATIVE WOODEN PANELS

FOR ENTRANCE HALL

In the world of interior design, the Palladio line emerges as a paragon of sophistication and versatility, offering a trio of exquisite wooden panel variants that redefine the aesthetics of living spaces.

With its distinctive color palette, each variant—the refined Palladio Wengé in black, the modern Grey model, and the bright and fresh White panel—serves as a canvas for creating unique environments.

What adds to the allure is the seamless harmony these colors share with the complementary Rialto coat rack, presenting a holistic design approach that caters to diverse tastes.

Palladio Wengé stands as an epitome of refinement, exuding elegance through its deep black color. This variant, with its rich and luxurious appearance, brings a touch of classic sophistication to any space.

The deep, dark tones of Wengé not only add a sense of opulence but also serve as a versatile backdrop for various interior styles, making it an ideal choice for those who appreciate timeless aesthetics.

The Grey model of the Palladio line takes a more contemporary approach, injecting a sense of modern style into the living space.

This variant, with its neutral yet distinctive grey hue, becomes a canvas for expressing a sleek and sophisticated design sensibility.

Grey serves as a versatile choice, seamlessly integrating into both minimalist and eclectic interiors, making it an excellent option for those who seek a balance between modernity and timelessness.

For those desiring an atmosphere of brightness and freshness, the White panel variant of Palladio becomes an inviting choice.

This variant not only amplifies the perception of space but also radiates a sense of cleanliness and purity.

White serves as a blank canvas, allowing for endless design possibilities, making it a favored option for those who wish to create a serene and airy ambiance.

What ties these three stunning variants together is their perfect coordination with the Rialto coat rack. The Rialto, designed to complement the Palladio line, seamlessly aligns with each variant's color palette.

Whether paired with the rich black of Palladio Wengé, the modern allure of the Grey model, or the bright freshness of the White panel, the Rialto coat rack becomes the perfect finishing touch, adding both functionality and aesthetic continuity to the ensemble.

In conclusion, the Palladio line not only presents a choice between three distinct wooden panel variants but also offers a masterful orchestration of colors that harmonize effortlessly with the Rialto coat rack.

This cohesive design approach allows for the creation of spaces that are not just visually stunning but also exude a sense of completeness and thoughtful curation.

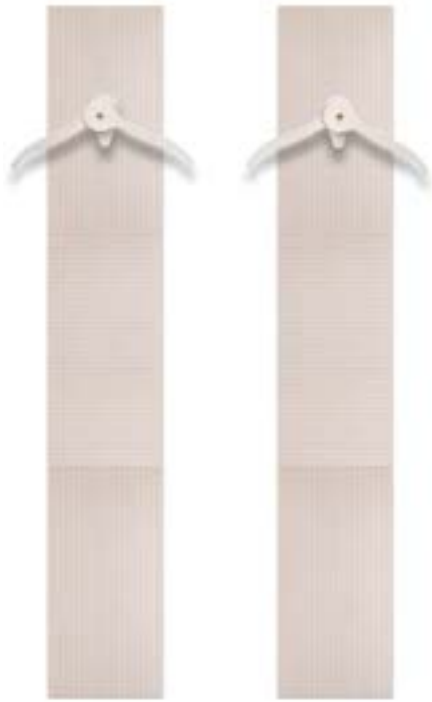
The Palladio line stands as an invitation to explore the myriad possibilities of interior design, where elegance meets functionality in perfect unison.

Dim; 180/30/2

Total Panels 6, Dim: each panel 30/60/2



PALLADIO PANELS



Palladio White
Rialto White



Palladio Black
Rialto White



Palladio Grey
Rialto White



Palladio White
Rialto Black

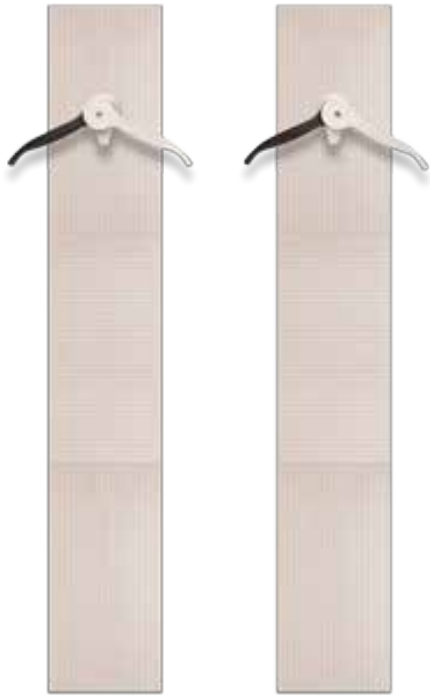


Palladio Black
Rialto Black



Palladio Grey
Rialto Black

PALLADIO PANELS



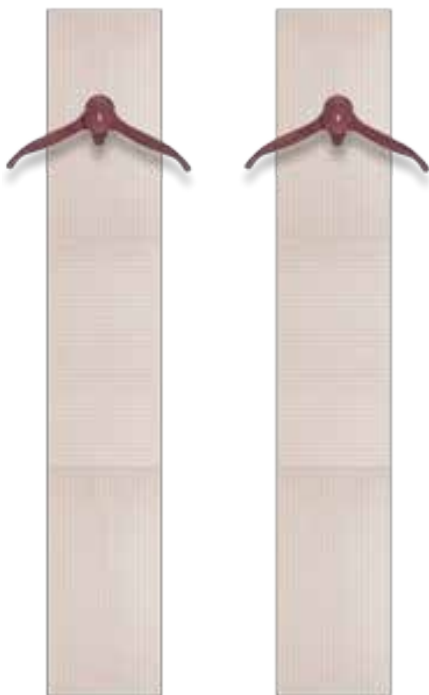
Palladio White
Rialto Day&Night



Palladio Black
Rialto Day&Night



Palladio Grey
Rialto Day&Night



Palladio White
Rialto Sunset

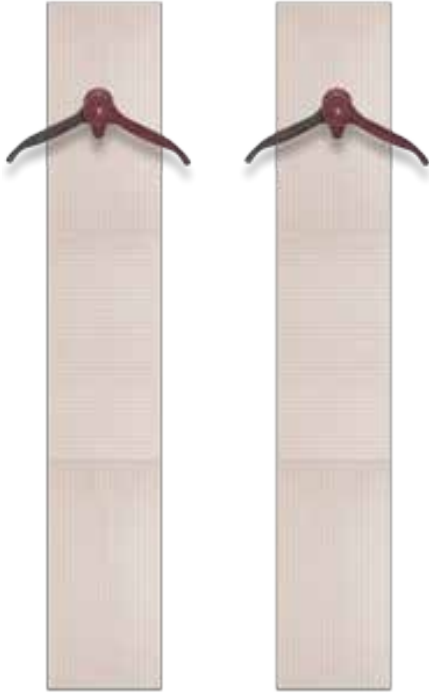


Palladio Black
Rialto Sunset



Palladio Grey
Rialto Sunset

PALLADIO PANELS



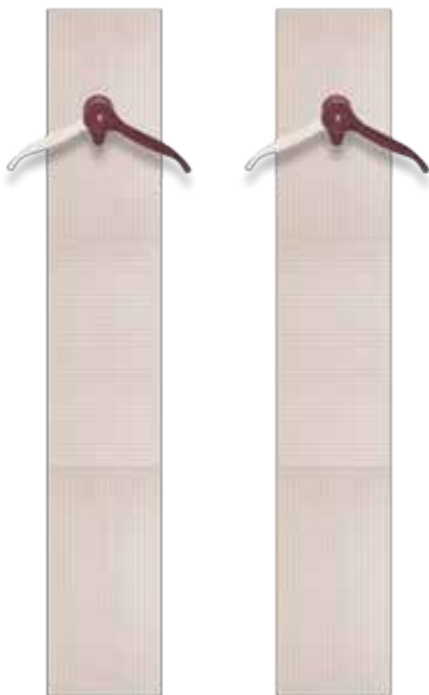
Palladio White
Rialto Storm



Palladio Black
Rialto Storm



Palladio Gray
Rialto Storm



Palladio White
Rialto Summer



Palladio Black
Rialto Summer



Palladio Grey
Rialto Summer

PALLADIO PANELS



Palladio White
Rialto Nude

Palladio Black
Rialto Nude

Palladio Grey
Rialto Nude



CANALETTO

Exploring Elegance: The Allure of Canaletto Collection's Timeless Design

In the realm of furniture design, the Canaletto collection stands as a testament to the marriage of simplicity and sophistication. This new line, characterized by its clean lines, meticulous craftsmanship, and innovative features, elevates the concept of home decor to a whole new level.





One of the standout features of the Canaletto collection is the choice of materials.

Each piece is meticulously crafted using high-quality materials that not only enhance the visual appeal but also ensure durability.

The designers have carefully selected materials that bring a sense of warmth and luxury to the collection, creating furniture that not only looks exquisite but also feels inviting.

The inclusion of mirrors in the Canaletto collection adds an extra layer of sophistication.

Mirrors have long been recognized as a timeless element in interior design, creating the illusion of space and adding a touch of glamour.

In the Canaletto collection, mirrors are seamlessly integrated into the design, reflecting the surrounding environment and amplifying the overall aesthetic.

Dim: 90/180/2 cm, mirror dimensions 60/180

DISCOVER OUR CANALETTO COLLECTION



A SYMPHONY OF COLORS: THE CANALETTO COLLECTION UNVEILS THE ELEGANCE OF CUSTOMIZATION FOR LUXURY HOTELS AND HOMES

In the design realm of luxury hotels and homes, the Canaletto collection takes a bold step forward by offering a harmonious fusion of sophisticated design and unparalleled customization.

With a palette as varied as the tastes of its discerning clientele, the Canaletto collection now boasts four distinct panel colors and seven carefully curated color compositions for its hangers, enabling hotels to create bespoke interiors that resonate with their unique brand identity.

The simple lines and fine materials that characterize the Canaletto collection find new expression through an expanded color offering.

The four available panel colors, ranging from timeless neutrals to striking hues, offer hotel and home designers a versatile canvas with which to play. This adaptability means the collection fits seamlessly into a variety of interior styles, allowing each hotel to define its own aesthetic narrative.

Hangers, the focal point of the Canaletto collection's functionality and design, are now available in seven carefully designed color compositions.

This wide range allows hotels to infuse their spaces with personality, whether opting for monochromatic elegance or a bold statement of contrast. The ability to mix and match coat rack colors opens up a world of possibilities, allowing designers to create spaces that are not only visually striking, but also in keeping with the unique atmosphere of the hotel and home.

Customization options in both panel colors and coat rack compositions attest to the Canaletto collection's commitment to meeting the diverse needs of luxury hotel interiors. Whether it's a classic, understated look or a vibrant, cutting-edge feel, the Canaletto collection offers a tailored solution that goes beyond simple furniture and becomes a reflection of the hotel's distinctive character.

Hotels can now create spaces that not only meet the functional needs of their guests, but are also immersive experiences. The wide range of colors in the Canaletto collection allows them to create bespoke environments that leave a lasting impression, ensuring that guests are enveloped in an atmosphere of luxury from the moment they enter their rooms.

Finally, the extensive customization possibilities of the Canaletto collection elevate it to a new level of versatility and personalization.

With four panel colors and seven suspension compositions to choose from, luxury hotels can now weave their own unique narratives into their interior spaces.

The Canaletto collection becomes not just a furniture collection, but a canvas on which hotels can paint their vision of opulence, making it a compelling choice for those seeking to redefine luxury through customization and design excellence.



DELUXE SERIES

Deluxe Hangers and Delux Panel in 24kt yellow gold leaf
Swiss precision and Italian creative design



IN THE REALM OF LUXURY INTERIOR DESIGN, THE PALLADIO LINE TAKES A BOLD LEAP INTO OPULENCE WITH ITS LATEST ITERATION.

Elevating the concept of refinement, each variant of the Palladio line now features hangers coated with 24kt gold leaf, making every piece a unique work of art meticulously crafted by expert artisans.

Complementing this regal touch, the wooden panels themselves are adorned with a coating of gold leaf, expertly brushed to enhance their elegance and individuality.

The pinnacle of extravagance within the Palladio line is reached with the hangers, where each piece is adorned with the richness of 24kt gold leaf. This luxurious touch transforms the hangers into not just functional elements but into exquisite, one-of-a-kind pieces that speak to the craftsmanship of skilled artisans.

The radiant glow of gold adds a timeless allure, making the hangers a statement of sophistication and exclusivity.

Crafted by expert hands, each hanger becomes a testament to the mastery of traditional techniques, ensuring that no two pieces are alike.

The uniqueness of each hanger tells a story of meticulous attention to detail and a commitment to creating objects of unparalleled beauty.

The 24kt gold leaf coating not only bestows a lavish aesthetic but also reflects the dedication to craftsmanship that defines the Palladio line.

Adding to this opulent narrative, the wooden panels themselves are enveloped in a coat of gold leaf, expertly brushed to enhance the texture and individuality of each piece.

This brushed gold leaf treatment brings a subtle texture to the panels, creating a tactile and visual experience that transcends the ordinary.

The panels, now transformed into gilded masterpieces, serve as the backdrop for the symphony of luxury that defines the Palladio line.

This union of brushed gold leaf panels and 24kt gold leaf-coated hangers creates a harmonious blend of elegance and extravagance.

The interplay of light on the brushed gold leaf surfaces adds depth and dimension to the panels, while the hangers, gleaming with the richness of gold, become focal points of regal splendor within the ensemble.

In conclusion, the Palladio line's embrace of 24kt gold leaf takes luxury interior design to new heights. The hangers, each a unique creation by skilled craftsmen, and the brushed gold leaf panels together form a golden symphony that speaks to the timeless allure of opulence.

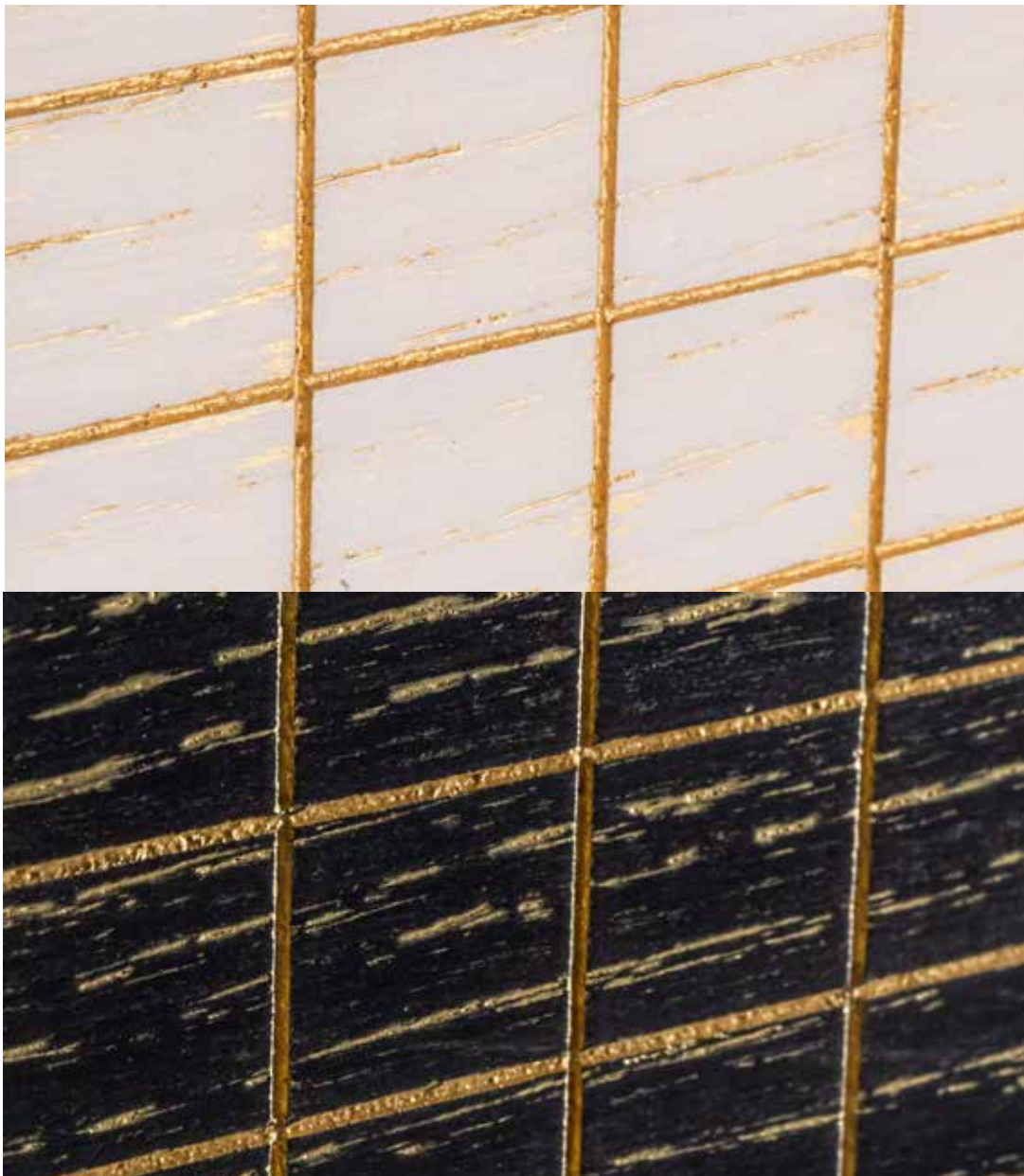
The Palladio line, with its golden touch, becomes a celebration of craftsmanship, individuality, and the transformative power of luxury in the world of interior design.

PARTICULAR GOLDEN PANELS

Dim. 30 cm / 60 cm

the engravings of 1 mm and a depth of 0.5 mm

performed on the panel, 2 panels engraved both vertically and horizontally



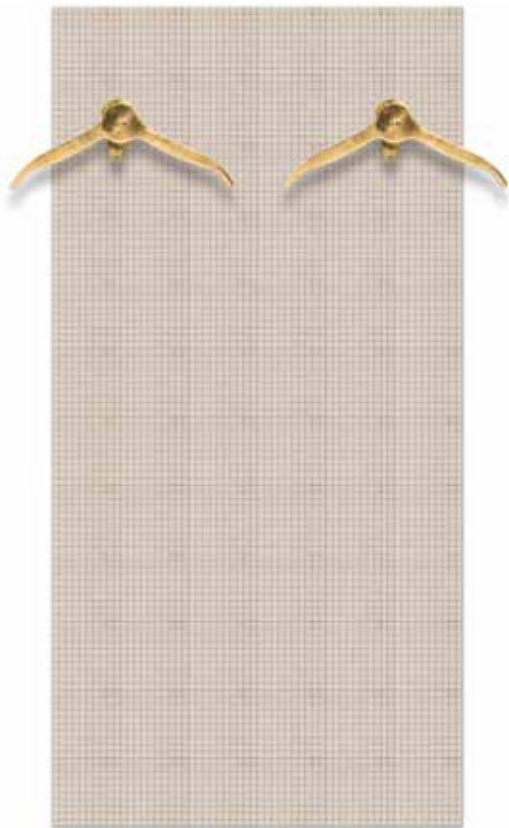
DELUXE CLASSIC

DL 1.0



the gold leaf is applied on the hanger, according to an ancient technique, after a careful processing the gold leaf is smoothed and polished with a special agate tool

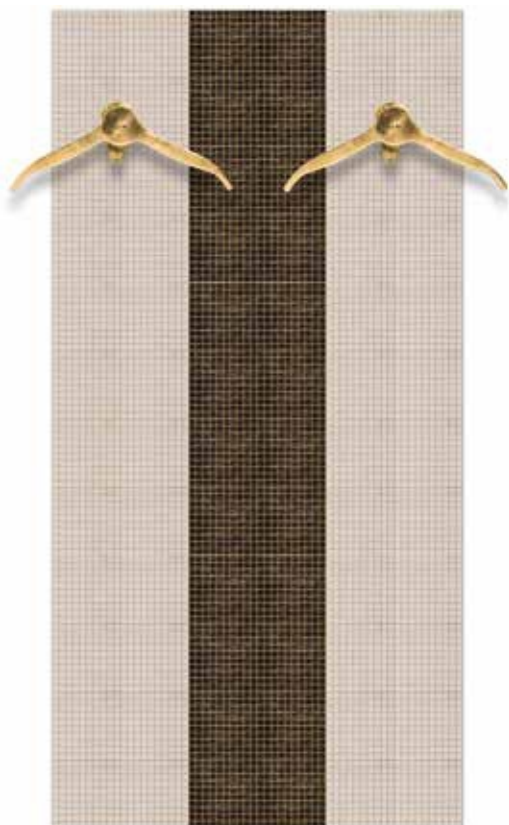
DL 5.1.1



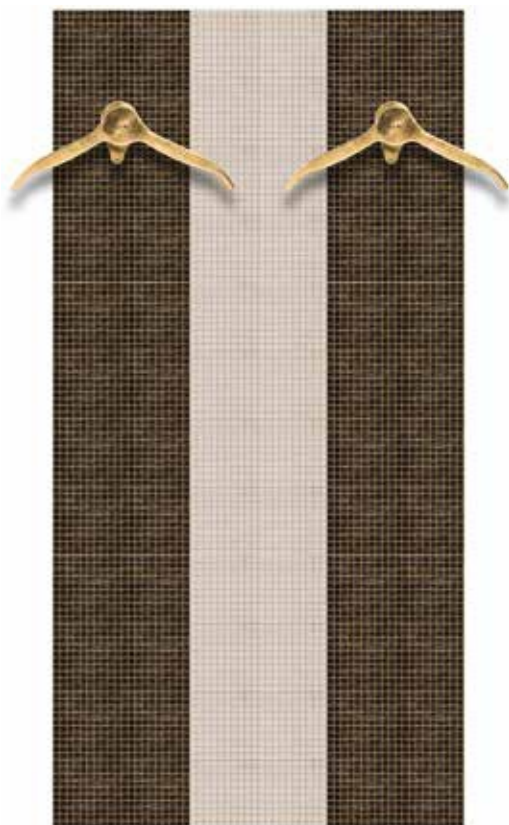
DL 5.2.1



DL 5.3.1



DL 5.4.1



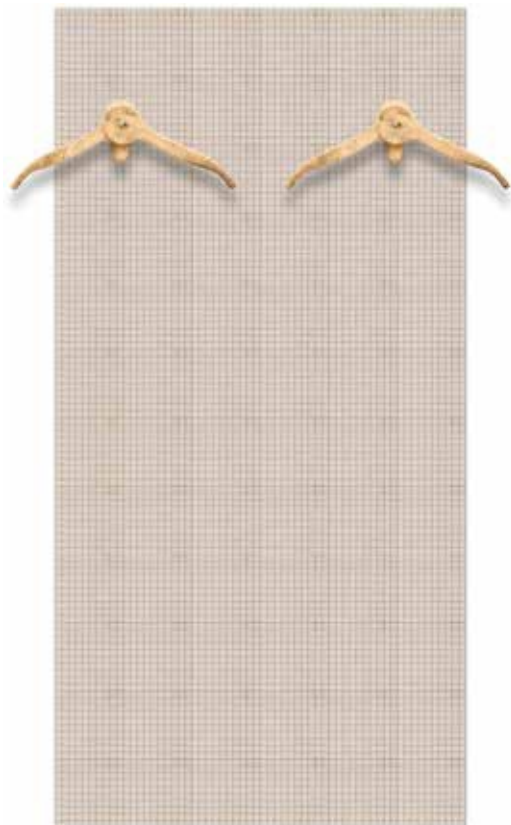
DELUXE ROSE

DL 2.0

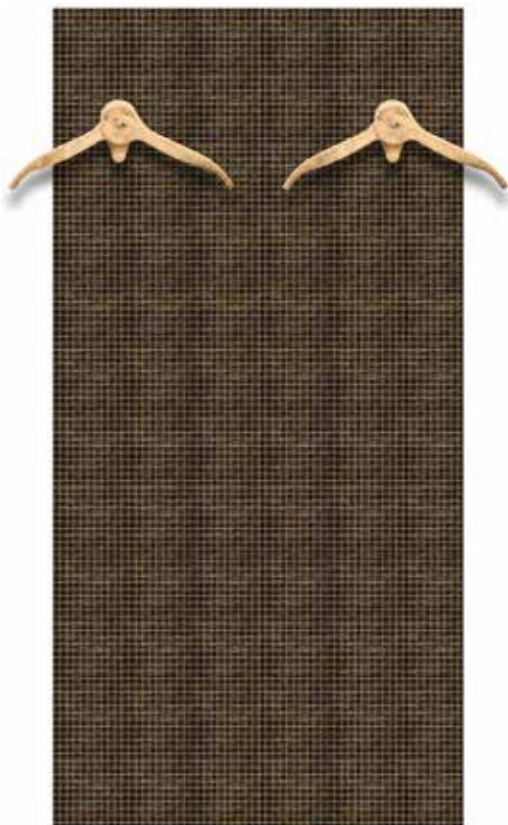


the pink gold leaf is applied with a particular technique called satin-finishing,
which increases the preciousness of the leaf

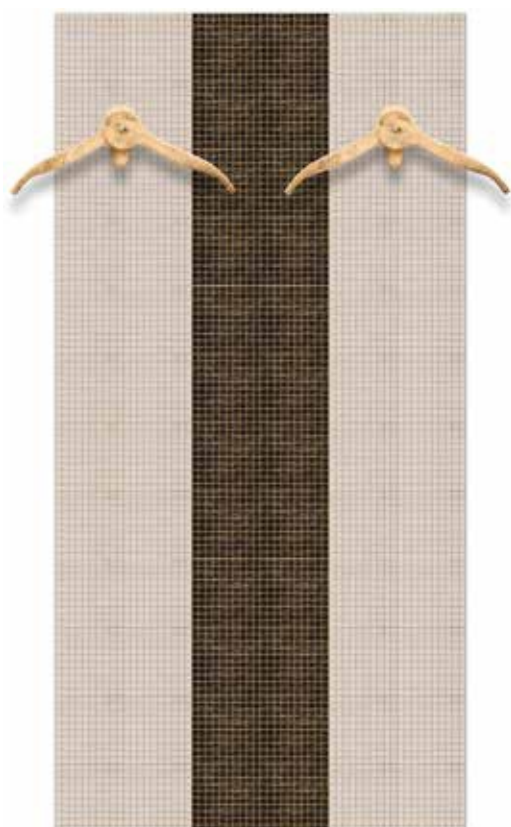
DL 5.1.2



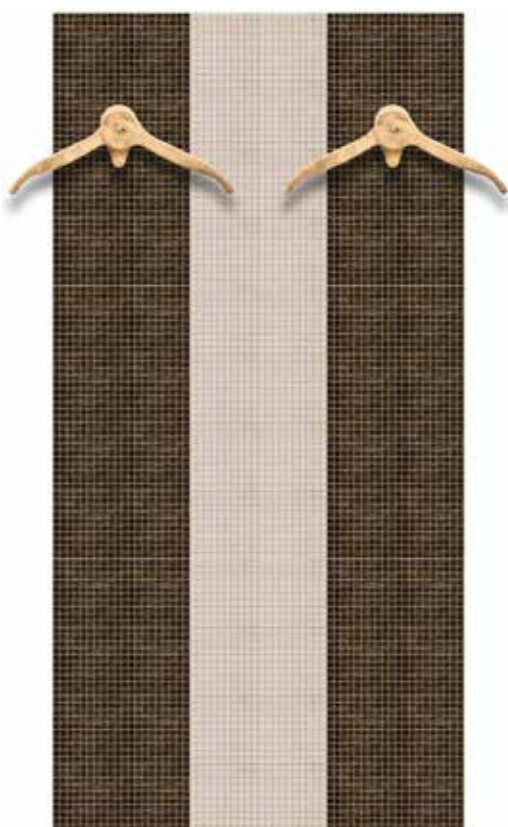
DL 5.2.2



DL 5.3.2



DL 5.4.2



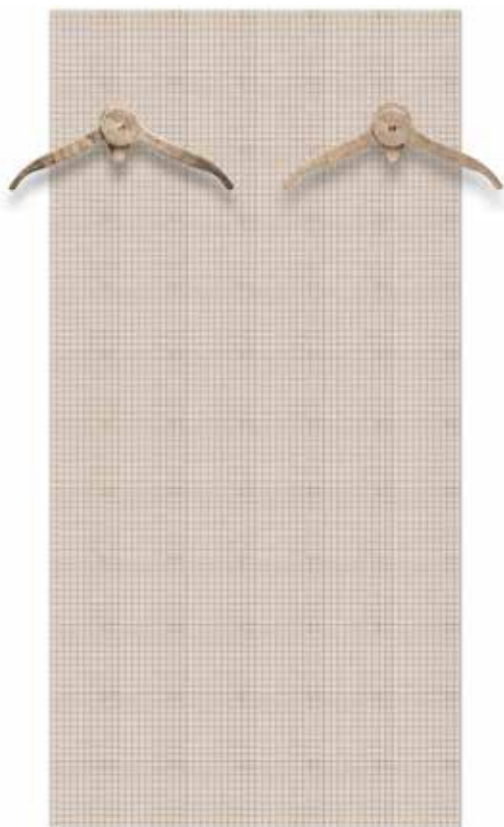
DELUXE CHAMPAGNE

DL 3.0



Champagne gold leaf is applied with a special technique called satin-finishing, which increases the preciousness of the product

DL 5.1.3



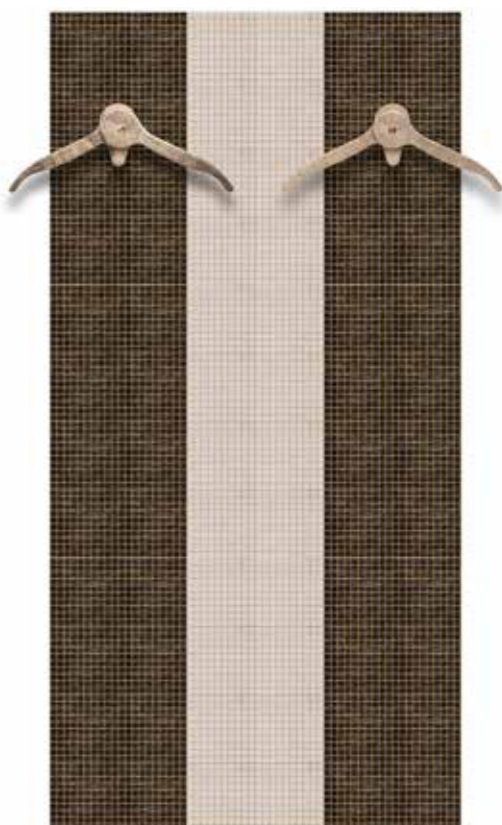
DL 5.2.3



DL 5.3.3



DL5.4.3



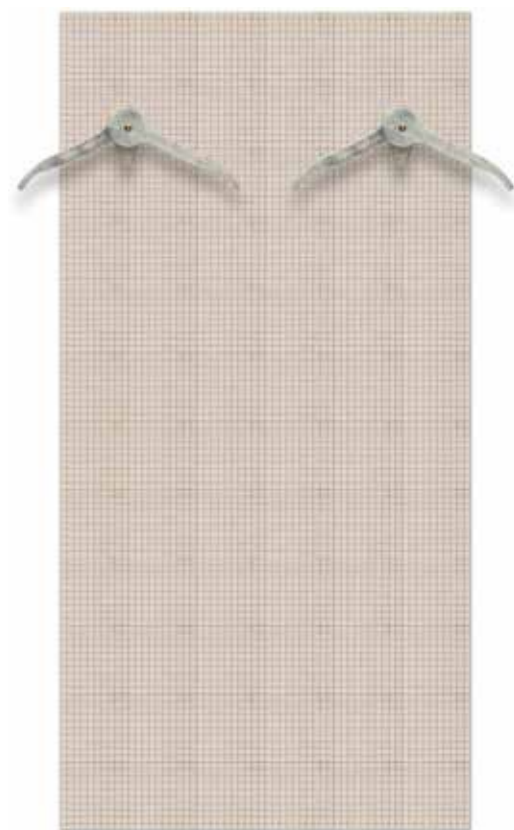
DELUXE PURE

DL 4.0



the white gold leaf is applied with a particular technique called skinning,

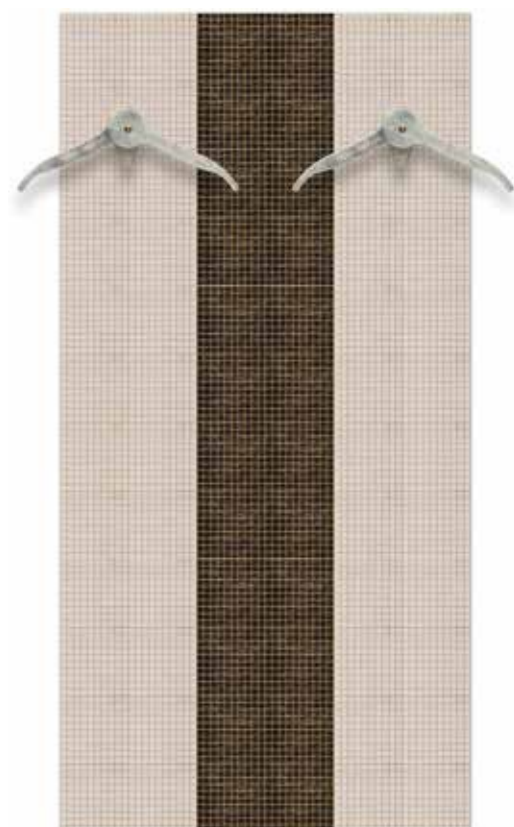
MD 5.1.4



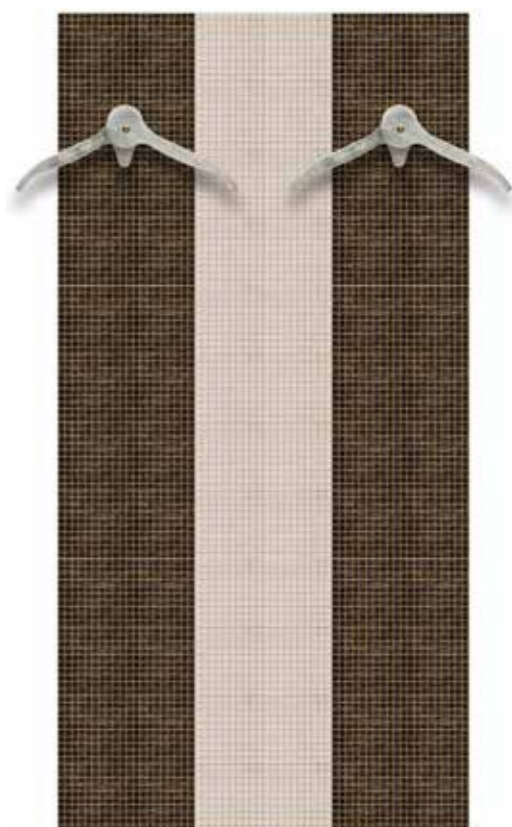
MD 5.2.4



MD 5.3.3



MD 5.4.3







sales@majordomo.ch